



SKINFINITY

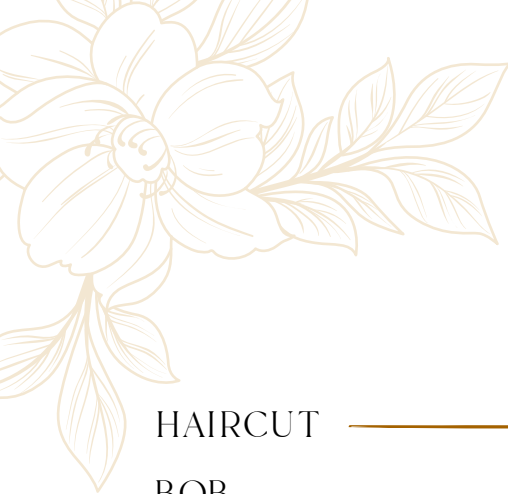
By KIRAN HAQ



www.skinfinitybykiran.com



HAIR



HAIR HAIRCUT

	HAIRDRESSER	SENIOR HAIRDRESSER
HAIRCUT	RS. 3,500	RS. 5,000
BOB		RS. 4,500
ONE LENGTH TRIMMING	RS. 2,000	RS. 2,500
GIRLS UNDER 8		
HAIRCUT	RS. 1,800	RS. 2,000
ONE LENGTH TRIMMING	RS. 1,500	RS. 2,000

IMPORTANT:

- *ALL OUR HAIRCUTS INCLUDE WASH AND BLOWDRY
- *RS 1,000 WILL BE CHARGED EXTRA IF YOU REQUIRE STYLING WITH TONG, CURLER OR AN IRON
- *INCASE OF A PROPER HAIRDO, FULL AMOUNT WILL BE CHARGED SEPARATELY

BOMBSHELL BLOW DRY (WITH DYSON) ————— RS. 2,500
 DYSON CLAIMS THE AIRWRAP WON'T DAMAGE YOUR HAIR AND IS ALSO LESS DAMAGING THAN OTHER COMPARABLE HOT TOOLS

BLOWDRY WITH HEATED ROLLERS ————— RS. 2,000
 IDEAL FOR TIGHT CURLS AND EXTREME BODY AND BOUNCE

TIGHT CURLY BLOWDRY ————— RS. 2,000 - 3,000
 IDEAL FOR A THICKER BOLDER LOOK

BASIC BLOWDRY ————— RS. 1,500
 STRAIGHT BLOWDRY IDEAL FOR BODY AND BOUNCE

HAIRWASH ————— RS. 500

STRAIGHTENING ————— RS. 2,000 - 3,000

RETRO WAVES ————— RS. 2,500 - 3,000

BEACH WAVES ————— RS. 2,500 - 3,000

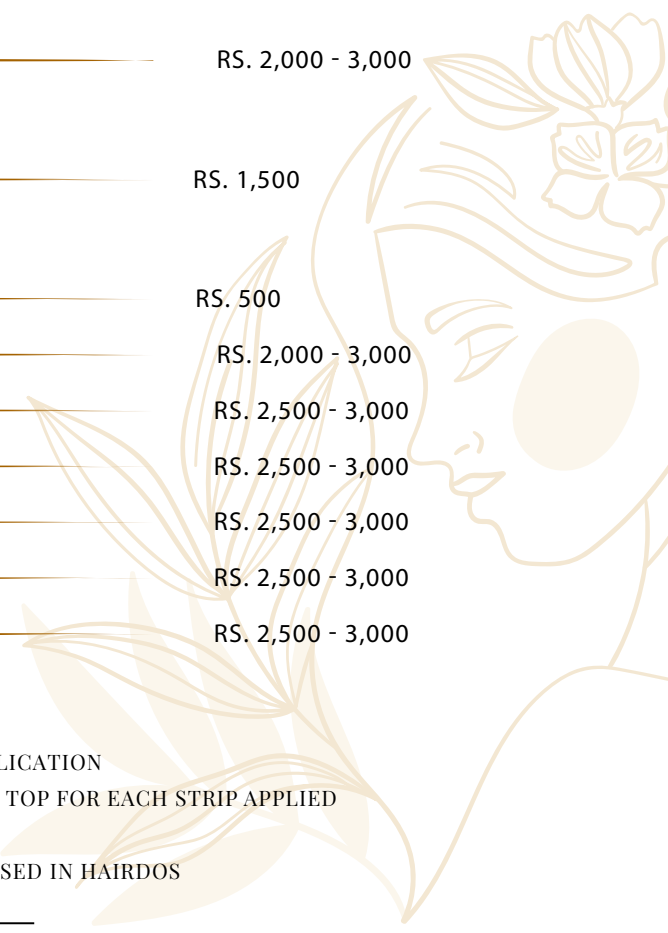
CURLS ————— RS. 2,500 - 3,000

HALF UPDO ————— RS. 2,500 - 3,000

FULL UPDO/BUN ————— RS. 2,500 - 3,000

IMPORTANT:

- *RS. 500 WILL BE CHARGED ON TOP FOR PERSONAL EXTENSIONS APPLICATION
- *FOR STRIP EXTENSIONS APPLICATION RS. 500 WILL BE CHARGED ON TOP FOR EACH STRIP APPLIED
- *ALL OUR STYLING SERVICES INCLUDE COMPLIMENTARY HAIR WASH
- *EXTRA CHARGES WILL BE APPLIED IF ANY DECORATIVE ITEMS ARE USED IN HAIRDOS





HAIR COLOR

HAIR COLOR

	FRAMESI	L'OREAL
ROOTS UPTO (1 INCH)	RS. 3,000	RS. 3,500
ONE COLOR	RS. 5,000 - RS. 15,000	RS. 6,000 - RS.16,000
HIGHLIGHTS (HALF HEAD WITHOUT BASE COLOR)		
ABOVE SHOULDER	RS. 10,000	RS. 12,000
BELOW SHOULDER	RS. 12,000	RS. 14,000
WAIST LENGTH	RS. 14,000	RS. 16,000
HIGHLIGHTS (FULL HEAD WITHOUT BASE COLOR)		
ABOVE SHOULDER	RS. 15,000	RS. 17,000
BELOW SHOULDER	RS. 17,000	RS. 20,000
WAIST LENGTH	RS. 20,000	RS. 22,000
GLOSS/TONER		
ABOVE SHOULDER	RS. 5,000	RS. 6,000
BELOW SHOULDER	RS. 6,000	RS. 7,000
WAIST LENGTH	RS. 7,000	RS. 8,000
OMBRE / BALAYAGE		
ABOVE SHOULDER	RS. 12,000	RS. 13,000
BELOW SHOULDER	RS. 13,000	RS. 14,000
WAIST LENGTH	RS. 14,000	RS. 15,000
FULL TRANSFORMATION (BASE COLOR CHANGE + OMBRE / BALAYAGE)		
ABOVE SHOULDER - BELOW SHOULDER	RS. 30,000	RS. 32,000
BELOW SHOULDER - WAIST LENGTH	RS. 33,000	RS. 35,000
PERSONAL BOX DYE APPLICATION	RS. 2,000	RS. 2,000
FASHION COLOR PER FOIL	RS. 2,000	RS. 2,000
BASIC COLOR PER FOIL	RS. 3,000	RS. 3,000

IMPORTANT:

- *KINDLY NOTE THAT THE CHARGES MAY VARY ACCORDING TO THE THICKNESS OF YOUR HAIR AND THE AMOUNT OF EXTRA TUBES USED
- *WE SUGGEST TO HAVE A DETAILED DISCUSSION WITH OUR HAIR TECHNICIAN BEFOREHAND IN ORDER TO HAVE A BETTER IDEA ABOUT YOUR SERVICE AND CHARGES
- *ROOT TOUCH-UP AND FINGER-DRY INCLUDES ONLY FINGER DRY. HOWEVER ALL OTHER COLOR SERVICES INCLUDE COMPLIMENTARY STYLING
- *15% EXTRA WILL BE APPLIED ON COLOR SERVICES WHICH ARE AMMONIA-FREE
- *APPLICATION OF L'OREAL NEUTRALIZING SHAMPOO DURING HEADWASH TO CANCEL OUT ORANGE TONES IS FOR RS. 1,000
- *ADDITION OF OLAPLEX IN YOUR COLOR SERVICE IS FOR RS. 4,000
- *ADDITION OF METAL DETOX IN YOUR COLOR SERVICE IS FOR RS. 3,500
- *COLOR SERVICES ARE PROCEEDED WITH A STRAND TEST WHICH IS FOR RS. 700
- *SALON MANAGEMENT HOLDS THE RIGHT TO DECLINE YOUR COLOR SERVICE IF THERE ARE ANY OPEN WOUNDS/SCARS/REACTION ON YOUR SCALP AS IT CAN CAUSE SERIOUS ISSUES



HAIR TREATMENTS

HAIR TREATMENTS

OLAPLEX TREATMENT _____ RS. 5,000 RS. 8,000
 FOR DAMAGED DEHYDRATED AND/OR COLOUR TREATED HAIR

POST KERATIN TREATMENT _____ RS. 4,000 RS. 6,000
 UNLOCK THE TRUE POTENTIAL OF YOUR HAIR WITH THIS TREATMENT. IT IS ENRICHED WITH KERATIN PROTEIN. IT STRENGTHENS AND NOURISHES, LEAVING YOUR HAIR IRRESISTIBLY SMOOTH, SHINY AND FRIZZ-FREE. THE BEST PART IS IT'S SULPHATE FREE.

INTENSE PROTEIN TREATMENT _____ RS. 3,000
 FOR EXTREMELY DRY AND BRITTLE HAIR THAT NEED A MOISTURE BOOST. IT INCLUDES HAIR OILING FOLLOWED BY PROTEIN MASK AND STEAM.

PROTEIN TREATMENT _____ RS. 2,500
 FOR DRY AND BRITTLE HAIR THAT LACK MOISTURE. PROTEIN MASK IS APPLIED TO YOUR HAIR AND IS PENETRATED THROUGH STEAM TO BRING BACK ITS PH LEVEL AND MAKE IT MORE MANAGEABLE.

MORPHOSIS RESTRUCTURE TREATMENT _____ RS. 6,000 RS. 12,000
 EXPRESS FILLER FOR DRY AND DAMAGED HAIR AND TO CONTROL HAIR FALL. PERMANENT SOLUTION FOR HAIR REPAIR. CANNOT WASH YOUR HAIR FOR 72 HOURS AFTER THIS TREATMENT.

MORPHOSIS ULTIMATE CARE TREATMENT _____ RS. 4,000 RS. 8,000
 FOR INSTANT LUXURY AND SMOOTHNESS

MORPHOSIS REPAIR RICH TREATMENT _____ RS. 4,000
 INTENSIVE SHINE TREATMENT FOR PARTICULARLY DESTRUCTED HAIR.

MORPHOSIS DENSIFYING TREATMENT _____ RS. 4,000
 IT IMPROVES HAIR DENSITY AND CONTROLS HAIR FALL. IT'S ALSO THE BEST SOLUTION FOR THOSE WHO HAVE A COMPLAINT OF FASTER FADING HAIR COLOUR BY IMPROVING HAIR DENSITY. IT HELPS YOUR HAIR COLOUR TO STAY FOR A LONGER PERIOD OF TIME.

MORPHOSIS SUBLIMIS OIL TREATMENT _____ RS. 3,500
 OIL DEEP TREATMENT FOR DRY HAIR.

MORPHOSIS REINFORCING ACTIVATOR _____ RS. 800
 IT'S AN AMPULE WHICH CAN BE ADDED IN YOUR HEAD WASH FOR OILY SCALP AND THINNING HAIR. IT IMPROVES HAIR HEALTH AND IS EXCELLENT FOR HAIR FALL.

MORPHOSIS DENSIFYING ACTIVATOR _____ RS. 800
 IT'S AN AMPULE WHICH CAN BE ADDED IN YOUR HEAD WASH. IT IMPROVES HAIR DENSITY AND CONTROLS HAIR FALL. IT'S ALSO THE BEST SOLUTION FOR THOSE WHO HAVE A COMPLAINT OF FASTER FADING HAIR COLOUR.

HAIR OIL WITH SHOULDER MASSAGE AND WASH (10 MIN) RS. 1,200
 HAIR OIL WITH SHOULDER MASSAGE AND WASH (15 MIN) RS. 1,600
 HAIR OIL WITH SHOULDER MASSAGE AND WASH (20 MIN) RS. 2,000

IMPORTANT:
 *THE CHARGES MAY VARY ACCORDING TO THE LENGTH AND THE THICKNESS OF YOUR HAIR

SEMI-PERMANENT HAIR TREATMENT KERATIN		
ABOVE SHOULDER _____	QOD	FELPS
BELOW SHOULDER _____	RS. 12,000	RS. 14,000
WAIST LENGTH _____	RS. 15,000	RS. 17,000
	RS. 18,000	RS. 20,000

IMPORTANT:
 *THE CHARGES MAY VARY ACCORDING TO THE LENGTH AND THE THICKNESS OF YOUR HAIR



WAXING & THREADING



WAXING & THREADING

FACE WAX

WAX FULL FACE WITH MASK AND SERUM	RS 3,000
EYEBROW WAX	RS 350
UPPER LIPS	RS 300
CHIN	RS 300
WAXING PER AREA	RS 300

FACE THREADING

THREADING FULL FACE WITH MASK AND SERUM	RS 2,500
EYEBROW	RS 250
UPPER LIPS	RS 200
CHIN	RS 200
THREADING PER AREA	RS 200





—
NAILS
—

NAILS

ACRYLIC NAIL EXTENSIONS

	HANDS	FEET
CLEAR TIP _____	RS. 6,500	RS. 6,500
NATURAL TIP _____	RS. 6,500	RS. 6,500
FRENCH TIP _____	RS. 5,500	RS. 5,500
FULL SET _____	RS. 4,000	RS. 4,000
REFILL _____	RS. 2,000	RS. 2,000
REGULAR FRENCH _____	RS 1,500	RS 1,500
OVERLAY _____	RS. 3,500	RS. 3,500
OMBRÉ _____	RS. 5,000	RS. 5,000
REMOVAL _____	RS. 1,500	RS. 1,500
ACRYLIC NAILS REMOVAL _____	RS 3,000	RS 3,000

GEL COLOR

	HANDS	FEET
UV GEL COLOR APPLICATION _____	RS 2,500/3,000	RS 2,500/3,000
FRENCH COLOR UV GEL APPLICATION _____	RS 3,000	RS 3,000
GEL _____	RS. 2,000	RS. 2,000
GEL SUPER SHINE _____	RS 1,500	RS 1,500
REGULAR SUPER SHINE _____	RS 800	RS 800
TOP COAT _____	RS. 500	RS. 500
GEL WITH OMBRÉ _____	RS. 2,500	RS. 2,500
NAIL ART _____	RS. 3,000	RS. 3,000
SHAPE AND BUFF _____	RS. 1,000	RS. 1,000
CHROME _____	RS. 5,000	RS. 5,000
BUILDER GEL _____	RS. 5,000	RS. 5,000
CAT EYE COLORS _____	RS. 7,000	RS. 7,000
DIP NAIL _____	RS. 4,000	RS. 4,000
GEL COLOR REMOVAL _____	RS 2,500	RS 2,500
MAGIC GEL REMOVAL _____	RS. 1,300	RS. 1,300

KIDS GEL COLOR

	HANDS	FEET
GEL _____	RS. 1,000	RS. 1,000
GEL WITH CHROME _____	RS. 1,500	RS. 1,500
NAIL ART _____	RS. 2,000	RS. 2,000
GEL REMOVAL _____	RS. 500	RS. 500

IMPORTANT:

*RS.150 WILL BE CHARGED EXTRA FOR EACH NAIL IF STONES OR STICKERS ARE ADDED



SKIN



SKIN

HYDRA FACIALS

7 STEP HYDRA FACIAL	RS. 8,000
7 STEP ANTI AGING HYDRA FACIAL	RS. 9,500
9 STEP 3D HYDRA FACIAL	RS. 11,500
11 STEP 3D LIFTING HYDRA FACIAL	RS. 18,000

GUINOT FACIALS

HYDRADERMIE CELLULAR ENERGY	RS. 9,000
HYDRADERMIE CELLULAR ENERGY PLUS	RS. 9,500
HYDRADERMIE CELLULAR ENERGY LIFT	RS. 11,000
HYDRADERMIE CELLULAR ENERGY LIFT PLUS	RS. 12,000
EYE LIFT TREATMENT	RS. 6,000
GUINOT PROTEIN RADIANCE	RS. 5,000
GUINOT WHITENING FACIAL	RS. 6,000
GUINOT OXYGENATING TREATMENT	RS. 7,000
GUINOT PERSONALIZED FACIAL	RS. 5,500

THALGO FACIALS

BRIGHTENING FACIAL	RS. 8,000
ACNE-PRONE SKIN FACIAL	RS. 9,000
ANTI AGING FACIAL	RS. 9,000
LIFTING FACIAL	RS. 10,500
PIGMENTATION FACIAL	RS. 10,000

JANSSEN FACIALS

JANSSEN CLEANSING	RS. 3,500
EXFOLIATION	RS. 4,000
SEBUM CONTROL CLEANSING	RS. 4,000
SEBUM CONTROL FACIAL	RS. 5,000
SUPREME WHITENING BASIC	RS. 5,500
SUPREME WHITENING FACIAL	RS. 6,500
MATURE SKIN FACIAL	RS. 6,000

IMPORTANT:

*ADD ON FACIAL POLISHER FOR RS. 1,000 ONLY

*ADD ON ANTI AGING/BRIGHTENING AMPOULE FOR RS. 1,000 ONLY





SKIN



SKIN

EXCLUSIVE

MOON GLOBE FACIAL _____ RS 2,500

FOR FULL AND TIRED SKIN. IT HELPS MINIMIZE PUFFINESS WITH THE HELP OF ICE GLOBES. WAKE YOUR SKIN UP WITH THIS ONE OF A KIND FACIAL

HERBAL FACIAL _____ RS 3,000

FOR SENSITIVE SKIN LOOKING FOR A HEALTHIER GLOW AND TO MAKE YOUR SKIN APPEAR MORE EVEN TONED

BRIGHTENING FACIAL _____ RS 3,500

FOR ALL SKIN TYPES LOOKING FOR BRIGHTENED SKIN WITH A COOLING SENSATION THAT HELPS YOU FEEL REFRESHED WITHIN

BASIC CLEANSING _____ RS 2,000

FOR ALL SKIN TYPES

BASIC CLEANSING FOR YOUR BACK _____ RS 3,000

THIS PROCEDURE HELPS YOU GET RID OF ALL THE BLACKHEADS, BACNE AND CLOGGED POSES

HYDRATING FACIAL _____ RS 5,000

FOR ALL SKIN TYPES LOOKING FOR A REFRESHED AND GLOWING SKIN. THIS FACIAL GIVES RESULTS, TRANSFORMING DULL AND DEHYDRATED INTO BRIGHT AND HYDRATED SKIN.

POLISHER

FACE POLISHER _____ RS 1,000

FACE AND DEEP NECK POLISHER _____ RS 1,800

FULL ARMS POLISHER _____ RS 1,000

FACE, DEEP NECK AND FULL ARMS _____ RS 2,500

HALF ARMS AND HANDS POLISHER _____ RS 1,000

FULL BODY POLISHER _____ RS 6,000

FULL BACK POLISHER _____ RS 1,500

HALF LEGS AND FEET POLISHER _____ RS 1,800

IMPORTANT:

*ADD ON FACE POLISHER FOR RS 1,000 ONLY

*ADD ON ANTI AGING/BRIGHTENING AMPOULE FOR RS 1,000 ONLY





RELAXING SERVICES

RELAXING SERVICES

BODY MASSAGE

BAMBOO MASSAGE (45 MIN) RS 7,000 (60 MIN) RS 8,500 (90 MIN) RS 10,000

A UNIQUE TYPE OF MASSAGE THAT USES HEATED BAMBOO STICKS TO APPLY PRESSURE TO VARIOUS PARTS OF THE BODY. THE PRESSURE AND HEAT FROM BAMBOO STICKS CAN HELP RELIEVE TENSION AND PROMOTE RELAXATION.

SWEDISH MASSAGE (45 MIN) RS 6,000 (60 MIN) RS 7,500 (90 MIN) RS 9,000

A SWEDISH-STYLE MASSAGE PRIMARILY INVOLVES LONG AND SOFT KNEADING STROKES TO RELEASE TENSION FROM THE DEEPEST MUSCLES OF YOUR BODY, WHILE RELEASING TENSION FROM THE SURFACE LAYERS OF MUSCLES. THIS METHOD USES LIGHT, TAPPING, RHYTHMIC STROKES.

HOT STONE MASSAGE (45 MIN) RS 5,000 (60 MIN) RS 6,500 (90 MIN) RS 8,000

A GREAT OPTION FOR PEOPLE WHO ARE LOOKING FOR A RELAXING AND SOOTHING MASSAGE EXPERIENCE. THE WARM STONES CAN HELP LOOSEN UP TIGHT MUSCLES AND PROMOTE RELAXATION.

DEEP TISSUE MASSAGE (30 MIN) RS 4,000 (45 MIN) RS 5,500 (60 MIN) RS 7,000

THIS MASSAGE TARGETS CHRONIC TENSION IN MUSCLES THAT LIE FAR BELOW THE BODY'S SURFACE. DEEP MUSCLE TECHNIQUES INVOLVE SLOW STROKES, DIRECT PRESSURE OR FRICTION MOVEMENTS THAT GO ACROSS THE MUSCLE GRAIN. FOCUSING ON THE TORSO (UPPER BODY) ONLY.

BODY MASSAGE WITH SOLUTION CURE BODY OIL RS 2,000

INFUSED WITH THERAPEUTIC AROMATHERAPY ESSENTIAL OILS, IT SOOTHES INFLAMMATION, RELIEVES BODY PAIN AND CALMS STRAINED MUSCLES.

BODY MASSAGE WITH LOTION CANDLE RS 1,500

VANILLA ORCHIDS, TONKA ABSOLUTE, AN INTENSIVE SKIN TREATMENT CANDLE. IT IS WHIPPED UP WITH SHEA BUTTER, COCOA BUTTER AND JOJOBA OIL, WHICH PROVIDES INTENSE MOISTURE.

SHOULDER MASSAGE (10 MIN) RS 1,000 (15 MIN) RS 1,500 (20 MIN) RS 2,000

FOOT MASSAGE (10 MIN) RS 1,000 (15 MIN) RS 1,500 (20 MIN) RS 2,000

BACK, NECK AND SHOULDER MASSAGE (10 MIN) RS 1,000 (15 MIN) RS 2,000 (20 MIN) RS 2,500

HAMMAM

HAMMAM (1.5 HRS) RS 9,500

BODY SCRUB RS 2,500

UBTAN SCRUB RS 2,000



MANICURE & PEDICURE

MANICURE & PEDICURE

BRIGHTENING (40 MIN)
MANICURE RS 2,000
PEDICURE RS 2,000

- POLISHER
- SOAK
- SCRAPING
DEAD SKIN
- CUTICLES
- SCRUB
- MASSAGE
- ADD ON NAIL PAINT
FOR RS. 500 ONLY

LAVENDER SPA (45 MIN)
MANICURE RS 2,500
PEDICURE RS 2,500

- POLISHER
- LAVENDER SOAK
- SCRAPING
DEAD SKIN
- CUTICLES
- LAVENDER SCRUB
- LAVENDER MASK
- MASSAGE
- NAIL PAINT

HERBAL (45 MIN)
MANICURE RS 3,000
PEDICURE RS 3,000

- UBTAN
- SALT SOAK
- SCRAPING
DEAD SKIN
- CUTICLES
- SUGAR SCRUB
- PEPPERMINT
CLAY MASK
- MASSAGE
- NAIL PAINT

PREMIUM (50 MIN)
MANICURE RS 3,500
PEDICURE RS 3,500

- POLISHER
- RELAXING SOAK
- SCRAPING
DEAD SKIN
- CUTICLES
- EXFOLIATING SCRUB
- CLAY MASK
- WARM TOWEL WRAP
- MASSAGE
- NAIL PAINT

SKINFINITY SIGNATURE
(01 HR 15 MIN)
MANICURE RS 5,000
PEDICURE RS 5,000

- POLISHER
- DEAD SEA SALT SOAK
- SCRAPING DEAD SKIN
- CUTICLES
- SUGAR SCRUB
- MOISTURE MASK
- WARM TOWEL WRAP
- THERAPEUTIC HEATED
SHOULDER PAD MADE OF WHEAT
FOR MUSCLE RELAXATION
- HOT STONE MASSAGE
- REPAIRING FOOT CREAM
- NAIL PAINT

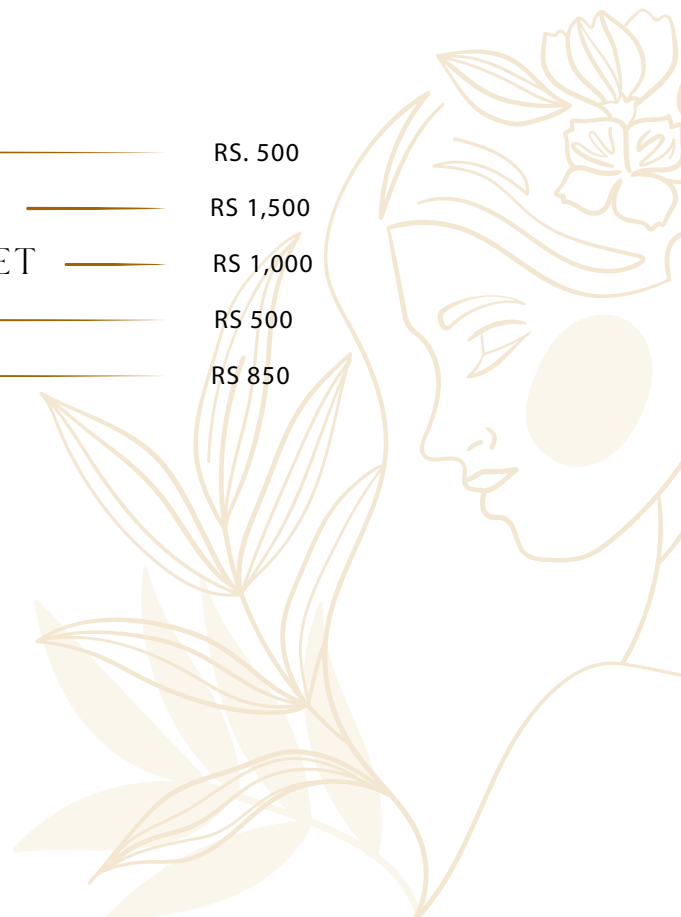
SHAPE/BUFF _____ RS. 500

OPI NAIL COLOUR FOR HANDS AND FEET _____ RS 1,500

BASIC NAIL COLOUR FOR HANDS AND FEET _____ RS 1,000

NAIL PAINT REMOVAL _____ RS 500

PARAFFIN WAX _____ RS 850





KIDS MANICURE & PEDICURE



KIDS MANICURE & PEDICURE

RELAXING (20 MIN)
MANICURE RS 1,000
PEDICURE RS 1,000

- SOAK
- MASSAGE
- BASIC NAIL PAINT

CLEANSING (25 MIN)
MANICURE RS 1,250
PEDICURE RS 1,250

- SOAK
- MILD SCRUB
- MASSAGE
- BASIC NAIL PAINT

NAIL ART WITH BASIC NAIL PAINT RS 800

IMPORTANT:

- *RS 500 EXTRA WILL BE CHARGED FOR CUTICLE CLEANING IF THE CLIENT HAS ACRYLICS
- *KIDS MANI/PEDI DOES NOT INCLUDE CUTICLE CUTTING AND/OR POLISHER





WAXING & THREADING



WAXING & THREADING

BODY FRUIT WAX

FULL ARMS RS 2.000
HALF ARMS RS 1.000
FULL LEGS RS 3.000
HALF LEGS RS 2.000

UNDERARMS RS 1.000
BRAZILIAN RS 2.000
HALF FRONT RS 800
FULL FRONT RS 1.500

FULL BACK RS. 1.000
FULL BODY RS 8.000

FRUIT WAX COMBOS

FULL ARMS + UNDERARMS + FULL LEGS	RS 5.000
FULL ARMS + UNDERARMS + FULL LEGS + BRAZILIAN	RS 6.500
FULL ARMS + UNDERARMS + FULL LEGS + BRAZILIAN + HALF FRONT	RS 7.000
HALF ARMS + HALF LEGS	RS 2.500

BODY SUGAR WAX

FULL ARMS RS 1.500
HALF ARMS RS 800
FULL LEGS RS 2.000
HALF LEGS RS 1.500

UNDERARMS RS 700
BRAZILIAN RS 1.500
HALF FRONT RS 500
FULL FRONT RS 1.000

BACK RS 1.000
FULL BODY RS 5.500

SUGAR WAX COMBOS

FULL ARMS + UNDERARMS + FULL LEGS	RS 3.500
FULL ARMS + UNDERARMS + FULL LEGS + BRAZILIAN	RS 4.500
FULL ARMS + UNDERARMS + FULL LEGS + BRAZILIAN + HALF FRONT	RS 5.500
HALF ARMS + HALF LEGS	RS 2.000





BRIDAL PACKAGES

BRIDAL PACKAGES

JUNIOR

SIGNATURE

MAIN DAY BRIDAL

RS 70,000

BARAT / WALIMA / SHENDI / SHALIMA

MAKE UP OF YOUR OWN CHOICE - INCLUDING HAIRDO, DUPATTA + JEWELRY SETTING AND NAIL PAINT

MAIN DAY BRIDAL MAKEOVER WITH SERVICES

RS 100,000

MAKEUP OF YOUR OWN CHOICE

HAIRDO

DUPATTA AND JEWELRY SETTING

NAIL PAINT

MORPHOSIS REPAIR RICH HAIR TREATMENT

JANSSEN SUPREME WHITENING FACIAL WITH POLISHER

LUXURY MANICURE + PEDICURE WITH POLISHER

FULL BODY FRUIT WAX

FULL BODY POLISHER

EYEBROW + UPPER LIPS (WAX OR THREAD)

1-NIKKAH / ENGAGEMENT / MEHNDI:

RS 35,000

SOFT GLOW/GLAM MAKEUP - INCLUDING HAIRDO, DUPATTA AND JEWELRY SETTING

2-DUA-E-KHAIR / MAYOUN / DHOLKI:

RS 20,000

VERY MINIMAL, NO MAKEUP LOOK - INCLUDING HAIRDO, DUPATTA AND JEWELRY SETTING

PARTY MAKEUP PACKAGES

1-SOFT PARTY MAKEUP WITH HAIRDO

RS 8,000

RS 10,000

2-SOFT PARTY MAKEUP WITHOUT HAIRDO

RS 6,000

RS 8,000

3-HEAVY GLAM PARTY MAKEUP WITH HAIRDO

RS 10,000

RS 12,000

4- HEAVY GLAM PARTY MAKEUP WITHOUT HAIRDO

RS 8,000

RS 10,000

3-APPLICATION AND SETTING:

EYE MAKEUP

RS 3,000

EYE LINER APPLICATION

RS 500

LASH APPLICATION

RS 1,000

LASH APPLICATION WITH LINER

RS 1,500

PERSONAL LASH APPLICATION

RS 500

PERSONAL LASH APPLICATION WITH LINER

RS 1,000

MINK LASHES

RS 2,500

DUPATTA AND JEWELRY SETTING

RS 1,500

JEWELRY SETTING

RS 800

TEEKA SETTING

RS 450

IMPORTANT:

*MINK LASHES, HAIRDO WITH STUFFING, DUPATTA AND JEWELRY SETTING IS INCLUDED IN ALL THE CHARGES MENTIONED ABOVE FOR BRIDAL MAKEOVER

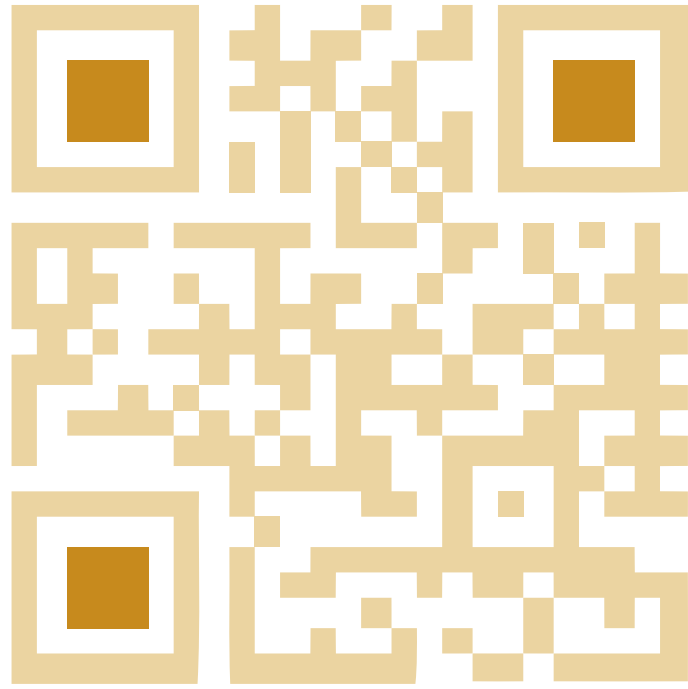
*NORMAL LIGHT LASHES ARE INCLUDED IN ALL THE CHARGES MENTIONED ABOVE FOR PARTY MAKEUP. HOWEVER, RS 2,000 WILL BE CHARGED EXTRA FOR MINK LASHES, RS 1,000 WILL BE CHARGED EXTRA FOR STUFFING, DUPATTA AND JEWELRY SETTING WITH PARTY MAKEUP

*FRESH FLOWERS FOR HAIRDO SHALL BE ARRANGED BY THE CLIENT

*FOR STRIP EXTENSIONS APPLICATION RS 500 WILL BE CHARGED ON TOP FOR EACH STRIP APPLIED.

*YOUR SLOT WILL BE BOOKED ON RECEIVING 50% ADVANCE PAYMENT WHICH IS NON-REFUNDABLE

*THE REST OF THE 50% SHALL BE CLEARED A DAY BEFORE OR THE SAME DAY BEFORE YOUR SERVICES START



0321-090-7777

Plaza No. 66 F rst Floor, Block-A, Phase-6C, DHA, Lahore

www.skinfinitybykiran.com



0321-090-7777



skinfinitybykiran



skinfinitybykiran



www.skinfinitybykiran.com

